

SPEEDSPY

The speedspy product is ideal for customers seeking a cost effective easy to use "Plug and Drive" solution for **Setting**, **Monitoring** and **Enforcing** the maximum allowed speeds for motor vehicles.



Easy as **1-2-3!**

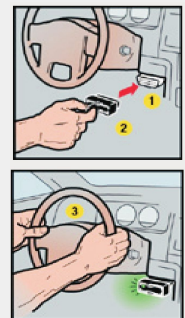
No tools or Automotive expertise required! Just plug **SpeedSpy** into the Onboard diagnostics (OBD) port. This is easily found under the dashboard or near the steering wheel.

The **SpeedSpy** can be used in ALL light vehicles (cars, small trucks, SUVs and vans) manufactured since 1996. It is simply plugged into the vehicle Data Link Connector (DLC) located inside the cabin under the dashboard.

The **SpeedSpy** is fully self contained and does not require batteries a computer or special download process and software. Set-up is accomplished by the use of 2 tactile switches and a pair of seven-segment displays **Over Speed violations and Tampering** are stored in memory and directly displayed. Access to the set-up process and violations data requires entry of the user defined 4 digit PassCode.

When the vehicle is in motion, the **EXACT** same speed as the vehicle speedometer will be displayed on the SpeedSpy. If the maximum allowed speed is exceeded, a loud and annoying buzz is produced until the speed is reduced to below the maximum speed allowed. Each time this happens, the violations count is incremented and stored.

If there are any speed violations or tampering incidents, they will be indicated by the display of **OS** (**Over Speed**) and/or **td** (**tampering detected**) and a chirping sound when the vehicle is **NOT** in motion or the ignition is switched **OFF**.



In addition, when there is a violation a simulated low level “Cricket” chirping sound is produced to call attention to the violation(s) status. This continues even with the ignition turned off. It can only be extinguished by the product user entering a PassCode.

First, decide on your set-up options as follows:

- MPH or KPH speed monitoring. Default is set for Miles Per Hour (MPH)
- PassCode to be used. Default is **0000**. We strongly recommend that another PassCode be assigned.
- Maximum allowed speed. Default is set at 40 Mph.
- Speed limit Enforcement or Monitoring only mode*. Default is set for Enforcement./
- Length of time (1 to 20 seconds) of **OverSpeeding** violation before it is logged in. Default is set for 10 seconds.
- Sleep Mode****

Set-up Menu Modes:

Mode **0** => Exit Set-up Mode.

Mode **1** => View Speed Count.

Mode **2** => View Acceleration Count.

Mode **3** => View Deceleration Count.

Mode **4** => Reset Setup Mode.

Mode **5** => Set Speed Limit.

Mode **6** => Set Acceleration Limit. (range **0-9**, **0**=disable, **1**=0.1g, **9**=0.9g)

Mode **7** => Set Deceleration Limit. (range **0-9**, **0**=disable, **1**=0.1g, **9**=0.9g)

Mode **8** => Speed. (**oF**=KPH, **On**=MPH)

Mode **9** => Adjust Overspeed Timeout.

Mode **A** => Change PassWord Key (**PWK**).

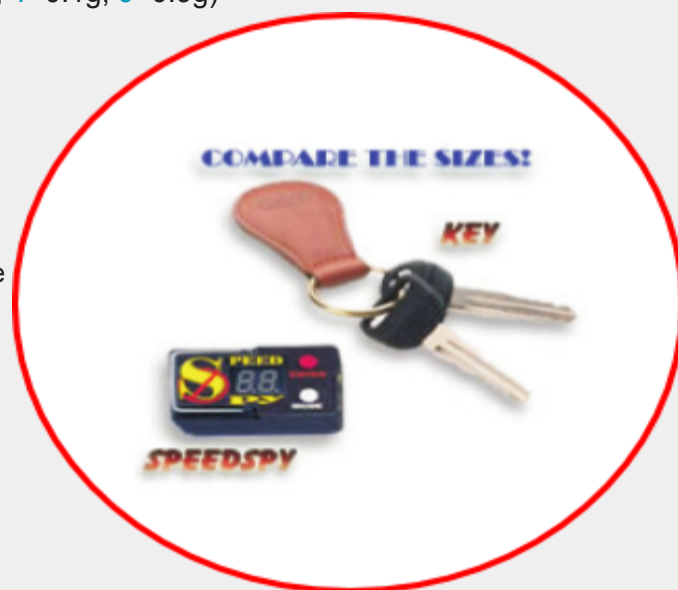
Mode **b** => Powersave.

Mode **C** => Clear Tamper Detect (**td**).

SpeedSpy Price: \$95.00 (Volume purchase order discounts available for all products).

Extension Cable: \$12.00 (Only required if the data link connector (DLC) is more than 2 feet away from the SpeedSpy location).

Power Pack: \$25.00 (This is only required if a SpeedSpy user wants the convenience of not having to use DLC power for the SpeedSpy demonstration and/or setup).



PLEASE NOTE: OUR SPEEDSPY PRODUCT IS **EXPERTLY DESIGNED** AND QUALITY MANUFACTURED IN THE **PHILIPPINES**. IT IS WARRANTED FOR ONE YEAR.



APEXS, INC.

Applied Expert Systems and Software Inc.

[We put technology to work for you!](#)

Suite 714 EGI City By The Sea,
Maribago, Mactan, Lapu-Lapu City,
Cebu Philippines 6015

☎ : Telefax: (6332) 495-2106, Phone:(6332) 268-6937

✉ : apexsinc@mozcom.com

🌐 : www.apexvalue.com